

USB Lecturer Tracking and Board Writing Detecting System

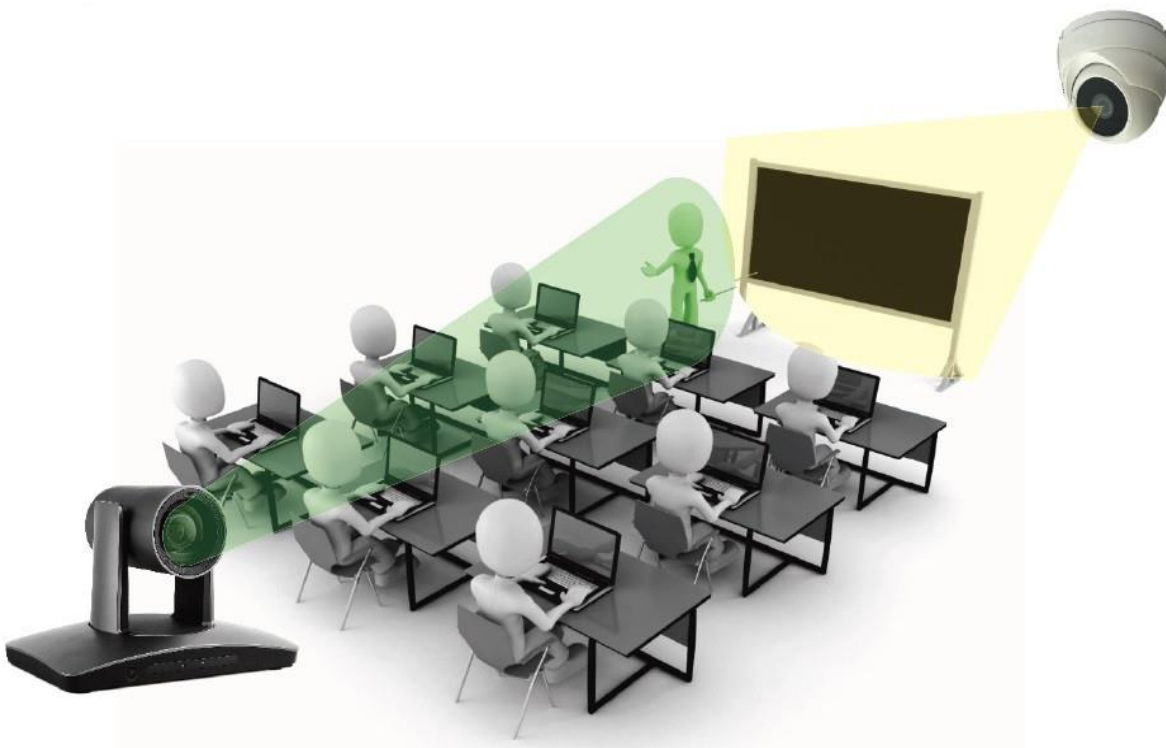


LTC2-A1202



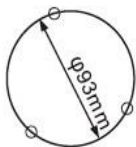
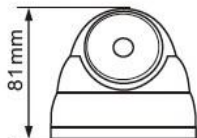
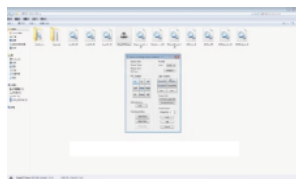
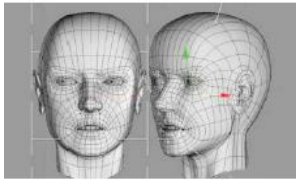
BLS-200

System Diagram



This smart lecturer tracking and board writing detection system consists of a USB HD lecturer tracking camera(USB3.0, DVI, SDI supported) and an IP board writing detecting sensor, configuration and installation of the system has never been so easy and effective; unique performance of the system is that, after the board writing detecting sensor detects writing actions on the board, it triggers the lecturer tracking camera to automatically move to the pre-defined board position and start tracking lecturer there. If undetected, the lecturer tracking camera can either keep tracking lecturer to return to pre-defined position and start tracking there.

Feature



USB 3.0

The lecturer tracking camera comes with USB3.0 and many other video interfaces. Giving it more flexibility to work with different recording solutions.

Precise lock and track capability

Tracking is based on both face detection and motion detection technology, which ensures smooth and precise lock & track performance even in comprehensive scenarios.

Unmanned and standalone tracking

Tracking performance is realized by the system itself, both its two lens manage the tracking algorithm, there is no need to have manual operation or have extra devices / sensors to assist tracking

Smart tracking performance

The system does not track on minor movements, it have tilt motion and auto zoom function to keep tracking lecturer properly once lecturer moves closer / farther, once object is lost, the system moves back to pre-defined position and keeps tracking at the position.

Board Writing triggers tracking

When board writing detecting camera detects sensor actions, it triggers the lecturer tracking camera to automatically move to pre-defined board position and start tracking lecturer there. If undetected, tracking camera can either stay or return to pre-defined position

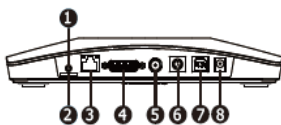
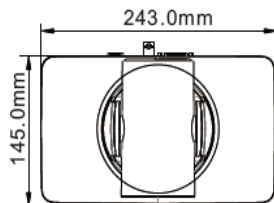
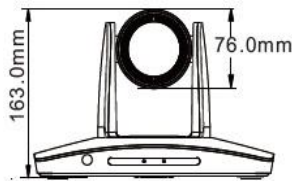
Easy connection, configuration and communication

The system supports to manage its tracking and other features through ethernet, connection, configuration and communication have never been so easy. It supports standard VISCA & Pelco D protocols to communicate seamlessly with your control device.

Technical Data

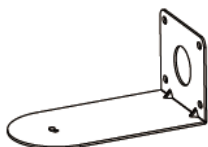
Model No.	BLS-200
Image Sensor	1/3" Exmor CMOS
Effective Pixel	4.0MP(2560x1440)
Min.illumination	1Lux @ F2.0
S/N Ratio	Above 50dB
Gain	Auto/Manual
Shutter Speed	1/30 - 1/10,000s
White Balance	Auto/Manual
Focal	2.4mm
View Angle	90°(wide) - 50°(tele)
Aperture	F2.0
Video Compression	H.264
Kbps	32Kbps-8Mbps
Video Frame Rate	720p30, 1080p30
Ethernet	10-100M, Support POE
Power Supply	DC12V, POE
Power Consumption	Below5W
Working Temp	0°C - +40°C
Humidity	Below 90%(No condensation)
Dimension	φ93mm * 81mm
Weight	0.33kg

Dimension

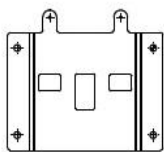


- ① Audio
- ② TF Card
- ③ Ethernet
- ④ DVI-D
- ⑤ 3G-SDI
- ⑥ RS-232/RS-485
- ⑦ USB3.0
- ⑧ DC12V

Accessories for LTC2-A1202



Wall Bracket



Ceiling Plate

Technical Data

Model No.	LTC2-A1202
Tracking Camera	
Image Sensor	1/2.8" Exmor CMOS, 2.14MP
Lens	f=3.9mm-46.8mm; F1.6-F2.8
Zoom	Optical:12X, Digital:12X
Field of View	72.5° - 6.3°
Focus	Auto, Manual, PTZ Trigger AF, One Push
Mini.illumination	0.5Lux(Color), 0.1Lux(B/W)
Shutter Speed	1/1 - 1/10,000s
Gain	Auto / Manual
White Balance	Auto,Indoor, Outdoor, One Push, Manual, Automatic Tracking
AE Control	Auto, Manual, Shutter Priority, Iris Priority
S/N Ratio	Above 50dB
Full View Camera	
Image Sensor	1/2.8" Exmor CMOS
Effective Pixel	2.15MP
White Balance	Auto
Exposure	Auto
Field of View	Horizontal:86°; Vertical:52°
Lens	2.4mm
PTZ	
Pan/Tilt Angle Range	Pan: -170° - +170°; Tilt: -30° - +90°
Pan/Tilt Speed	Pan: 0.1° - +120°/s; Tilt: 0.1° - +90°/s
Preset Number	256
Control Interface	RS232/RS485/USB3.0
Ethernet	RJ45,100M
Control Protocol	PELCO-D / VISCA / UVC
Network	
Image Resolution	1920x1080 @ 60fps
Frame Rate	1080P60/1080P50/1080P30/108025 1080I60/1080I50/720P60/720P50
Video Compression	H.264
Audio Compression	AAC
Protocol	ONVIF / RTSP / RTMP / TCP / UDP
Dual Stream	Support
Video Interface	3G-SDI / DVI-I / USB3.0
General	
Power Supply	DC12V
Power Consumption	<20W
Working Temp	0°C - +40°C
Storage Temp	-20°C - +60°C
Dimension	243mm(L) x 245mm(W) x 163mm(H)
Weight	1.2KG
Color	Grey

*** Product specification are subject to change without notice ***